



ANNUAL REPORT JUNE 2016–2017

P·E·A·C·E



WE BELIEVE EMPOWERING COMMUNITIES IN RURAL AFRICA IS
ESSENTIAL TO THE PRESERVATION OF ELEPHANTS AND RHINOS



MISSION STATEMENT

In the understanding that development means the development of people, it is the P.E.A.C.E. Foundation's objective to provide disadvantaged communities with the necessary tools, skills and information to bring about their own development, and, in so doing, improve educational and socio-economic standards in their communities, thereby, alleviating poverty.

DIRECTORS REPORT

After 24 years of reporting on the annual progress of the P.E.A.C.E. Foundation's work in poverty alleviation, and facing the challenges that present themselves in this area, it is very exciting to report on the positive effect that our recently formed relationship with EPI-USE has had on the work of the Foundation. As a member of groupelephant.com and a core partner in their mission: "to protect and preserve elephants and rhinos, in the wild, through the alleviation of poverty in rural communities - ERP - (Elephants, Rhinos and People), we continue to receive extensive support for our poverty alleviation programs.

Currently, local communities receive little or no economic benefit from the protection of wildlife, particularly on restituted land, and they become victim to the propagation and facilitation of poaching as their only source of income. When provided with a direct, economic benefit from the protection of wildlife, the voice of the communities then play a key role in preventing poaching and fighting for the protection of their much valued cultural and environmental heritage.

With the above philosophy, as the ERP driving force, the P.E.A.C.E. Foundation has been enabled to widen its offering to rural communities from the point of view of socio-economic opportunities, linked directly into the field of conservation and tourism, with the adjunct opportunities for agriculture and improved education, being a core component of the offering, giving renewed credence and relevance to the holistic P.E.A.C.E. Model.

TRUSTEES

A very special thank you to our Board of Trustees, many of whom have been supportive of our work since its inception.

We would not have survived without their ongoing interest, support and commitment. We will always be grateful for the many years of support that we received from Stephen Owens while in his position as Chairman and we will always miss his personal contribution to the work that we do.

We are comforted by the fact that he has found a happy space for himself and his family in his new home in Australia and we wish him well, always. We are very appreciative of the support and commitment of our current Chairman, Phakama Nhasengo and we look forward to many more terms of office with him as Chairman of our Board and Lesiba Masibe as Vice Chairman.

I would like to make special mention of the ongoing, pro bono, service that we receive from James Arbuthnot, who continues to scrutinize, authorize and make our month end payments, electronically, even though he is now living in Cape Town. For his ongoing commitment and loyalty, we are deeply grateful.

P.E.A.C.E. FOUNDATION STAFF

To the P.E.A.C.E. Foundation staff, I take this annual opportunity to formally thank our longstanding, loyal and totally committed staff, Edith Hlalele, Eliot Chisango, Thami Mupawose, Nonceba Lushaba, and Lesiba Masibe for their commendable and much valued contributions to the P.E.A.C.E. Foundation. Our capacity has recently been enhanced with the addition of contracted service providers, Angelique Anjiho and, Jean Nagiah, joined us more recently, focusing on fundraising, educational support programs and opportunities presented through the B-BBEE Scorecard.

Our established partnerships with Dereck Milburn and Arthur Anderson have brought expansive and exciting opportunities to the P.E.A.C.E. Foundation in the space of Local Economic Development and conservation. The partnership with Arthur Wade Anderson was recently concluded, and is, we anticipate, the first of many more such partnered investments with up and coming social enterprises that impact positively on the work that we do.

Arthur is doing remarkably innovative and impactful work on the construction and planning side of the P.E.A.C.E. Foundation's offerings.

Sadly, as has been the case in the past two years, we have, once again, lost a much valued partner and service provider in the work that we do. Basil Kransdorf passed away, very suddenly, and most unexpectedly, from a heart attack in mid-December.

Basil was well loved and greatly appreciated by all who knew him not only for developing the amazing product, ePap, with its remarkable health benefits for orphans, the elderly and the sick, but also as a caring, and thoroughly honest human being, committed to the wellbeing of those less fortunate and to the vision that he held so strongly, of a nutrient replete society. Basil is sorely missed by all who knew him.



PROJECTS

The past year brought some very exciting projects and opportunities in all sectors of our work. I will deal with some of them under their relevant sector headings within the P.E.A.C.E. acronym.



PLANNING

Working in partnership with the private sector and local and traditional leadership, we stimulate Local Economic Development and provide support services to rural communities

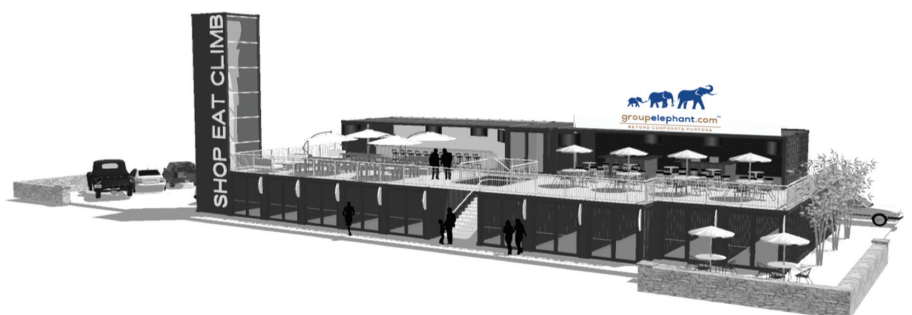


The basic brick and mortar P.E.A.C.E. Hub has been replaced by a more readily deployable, containerized version which fulfills multiple functions in keeping with the P.E.A.C.E. Model. Over and above providing a meeting place and IT training centre, the updated version provides opportunities for the establishment of a multiplicity of small businesses, from hair salons to clothing outlets for locally manufactured goods, leading to greater self-sufficiency and sustainability in deep rural economies. Arthur Wade Anderson, with his containerized solutions, along with his effective alternative building solutions, brings a very exciting dimension to our HUBS and PODS, turning them into vibrant community owned and supported spaces with innovative educational, health and business solutions.

The model, which is depicted below, is the proposed model for future HUBS, designed by Arthur, and incorporating innovative, business based opportunities for rural communities.

ORPHANS AT NDUMO

Following on the passing of Basil Kransdorf, we are continuing with efforts to support the Ndumo Orphans, through a fundraising campaign, with the assistance of groupelephant.com, in the United States. The needs of the Ndumo orphans continue to grow and the funds that were previously provided to the Orphans Committee from the Catholic Church for them to support the orphans, through providing care givers in the field has now been reduced, while the number of orphans in the small village and its surrounds has grown to almost two thousand. Their work has had to be curtailed due to lack of adequate resources and this impacts negatively on the lives of many desperate and needy children.





EDUCATION

Providing online and remote access to educational support material and training courses from pre-school to tertiary



VAALWATER CENTRE (WWS)

The P.E.A.C.E. Foundation has, up until now, been a partner in a Joint Venture agreement with the Waterberg Welfare Society (WWS) in their Community Centre Building (photo top left). We are, currently, in negotiations with the WWS to acquire a long lease on the Centre Building. This Centre, in Vaalwater, was recently provided with a state of the art IT Training Centre and Internet Café, funded through iLab, (a member of the EPI-USE group) through the B-BBEE Scorecard.

Lesiba Masibe is pictured making the presentation on behalf of ERP/P.E.A.C.E. We will monitor the progress of this intervention and record its impact in this very remote school in Blouberg, Limpopo.



Clement Moasa, (second photo from bottom), hosting the ceremony. Clement is committed to assisting this school which he attended and rose to great heights as a TV star – determined to inspire young people that anything is possible in life – he is an outstanding example and we are privileged to have his support in all our efforts and as a formal ERP Ambassador.

The Community Radio Station, located in the Centre, was recently provided with funding from EPI-USE to improve their facilities and this has resulted in a great opportunity for ERP/P.E.A.C.E., to lease the property and invest in the renovation and development of the site.

BICYCLES FOR RURAL SCHOOLS - BLOUBERG, LIMPOPO

Thanks to the amazing continued efforts of two EPI-USE consultants, Nicolai van der Merwe and Gert Vermeulen, who are enthusiastic cyclists, the bicycle fundraising efforts (last photo) will carry on for another round, this season.

RAMATEMA SCHOOL INTERVENTION

In February, an innovative, and, we hope, very effective intervention was carried out by the P.E.A.C.E. Foundation, with assistance from Clement Moasa (TV star and ERP Ambassador), along with some of his colleagues at the SABC and the sporting celebrity, Caster Semenya. Laptops, loaded with the High School curriculum, were donated to the Ramatema High School (second photo from top). The teachers were brought to tears with excitement and gratitude.

Eliot Chisango measures the impact on academic progress as well as absenteeism, on children who received bicycles as beneficiaries of the previous fundraising efforts for schools in the Blouberg, Limpopo.



We look forward to identifying a new group of beneficiaries, going forward. (See the video on our P.E.A.C.E. Website).



AGRICULTURE

Transforming subsistence farming into commercially sustainable cooperatives and industrializing the agricultural sector

The Sicabazini Farmers' Cooperative continues to grow and has provided us with a model which can be replicated anywhere for the development of primary agricultural cooperatives. A Second Tier cooperative has been registered, comprising four farms in the area and once we can access funding for this second tier structure to become operational, it, too, should provide a ground-breaking model for the support of small scale cooperative farming initiatives with regard to centralized buying, support services, branding and marketing.

We continue to receive support from Toyota Tsusho Africa, on a renewed annual basis, providing grant funding which enables us to support the provision of a manager, whose salary is paid for by Toyota, through the P.E.A.C.E. Foundation. We recently, received additional funding through ERP, based on their USA 1% from their client, Pepsi, USA. This funding enabled us to further cultivate an additional five hectares and we look forward to profitable results.



COOPERATIVES

Creating sustainable jobs through waste management- collection and recycling. We also support eco-tourism ventures

We have had success in the Waste Management sector, with the Thinana Cooperative which is growing in profitability and management skills, as well as the Sicabazini Agricultural cooperative in Kwa-Zulu Natal. Our mission is to grow the strength of these cooperatives through the establishment and support of second tier structures that will provide financial services and marketing to primary cooperatives, strengthening their ability to grow and perform in a more effective and business-like manner.

WASTE MANAGEMENT

We have developed a strategy for waste recycling in rural areas, focusing on collections using trolleys and donkey carts (picture top left), sorting and selling of this waste to generate income for the unemployed rather than dumping and land-filling it.

We initiated this recycling buy-back centre in Senwabarwana (Limpopo) at the beginning of February 2014. Five female beneficiaries currently run the center and have employed eight other collectors and three additional personnel to assist with the baling of waste.

Eliot Chisango has won a number of awards, including a United Nations Environmental Award through SEED and a local award from the recycling company, PETCO, based on the work that he has done to develop a sustainable rural waste management model.



ENVIRONMENT

This project was initiated to solve the problem of human/elephant conflict while at the same time promoting conservation

CONSERVATION ERP (ELEPHANTS, RHINOS AND PEOPLE) HUMAN/ELEPHANT CONFLICT - A SOLUTION

Our first Beehive Fence was deployed in Kwa-Zulu Natal, on the Mozambique border, in an effort to repel elephants from crossing over from Mozambique into KZN, damaging local crops and reducing human/elephant conflict in the area.

The first 20 beneficiaries have been trained and forty hives have been erected along the border. This initiative was funded by SAP, globally, through ERP and, to date has proved very successful, providing a much needed income and new skills for the beneficiary subsistence farmers as well as a solution to potential human/elephant conflict.

LAND RESTITUTION

With regard to land restitution, the Moepel Farms opportunity is still under negotiation with Lesiba Masibe as the negotiator. It is expected that there will imminently be changes to the legislation governing land restitution. At present, it is impossible to partner or obtain long leases on restituted land as the new owners are not being provided with title deeds which secure lease agreements. Dereck Milburn is working closely with government in the Limpopo in an effort to expedite this process and bring a change in legislation. Our work in conservation, with the capability of moving endangered elephants and rhinos to safe havens is being greatly enhanced by Dereck Milburn's contribution in the field of collaring and relocating animals, in particular elephants that are under threat.

FUNDERS AND PARTNERS



Continued support, over a period of many years, from the Victor Daitz Foundation in funding a portion of our administrative costs is always greatly appreciated.

EPI-USE and EPI-USE ANALYTICS, continue to provide us with their Enterprise Development and SED spend and they cover the P.E.A.C.E. Foundation's monthly administrative costs. This support allows the Foundation to channel 100% of all funds received from EPI-USE, from their ERP funding initiative, (i.e 1% of EPI-USE global revenue), directly into projects. We will continue, however, to charge local corporates an administrative fee of a minimum of 10% of a total project cost, to enable us to implement and manage local donor funded projects effectively, particularly through the B-BBEE Scorecard.

We continue to have a partnership agreement with Raizcorp and we appreciate the funding that they provide on a monthly basis.

The Ashoka network provides a valuable group of partners, globally.

Toyota Tsusho Africa continues to fund and support our agricultural model, for the past eight years. This has enabled us to develop an initiative which is replicable and sustainable and provides a suitable means of addressing poverty through agriculture, wherever it is required – creating employment and improving the quality of life and health in deep rural communities – transforming subsistence farmers into commercial agricultural ventures.



CONCLUSION

The P.E.A.C.E. Foundation has been fortunate to have been involved with many inspirational people who have helped make its vision for rural development a reality. By far the most inspirational people, however, are those who comprise the communities in which the Foundation works - individuals who have refused to give up in the face of seemingly insurmountable obstacles, and who remain positive in spite of the fact that they face daily struggles for survival that most of us cannot even begin to imagine.

It is humbling to be confronted with the hope, spirit, love and dignity of the people in the disadvantaged communities in which we work, and it has been a privilege to be associated with initiatives to improve their quality of life. We urge you to join us in an effort to eradicate the poverty in our midst and make a lasting difference in impoverished rural communities – together we can do it.



P.O Box 787464,
Sandton, 2146

Tel: +27 11 057 1192

www.peacefoundation.org.za
www.groupelephant.com