

# HIGHLIGHTS FROM 2018

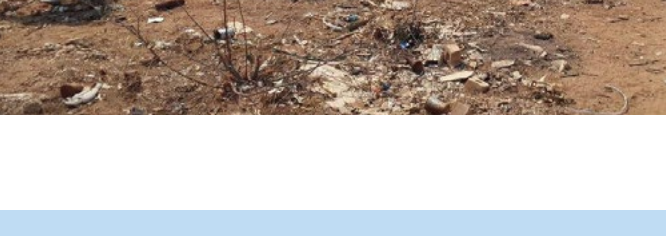


## CELEBRATING 25 YEARS OF POVERTY ALLEVIATION IN RURAL COMMUNITIES THROUGH PLANNING, EDUCATION, AGRICULTURE, COOPERATIVES AND ENVIRONMENT.



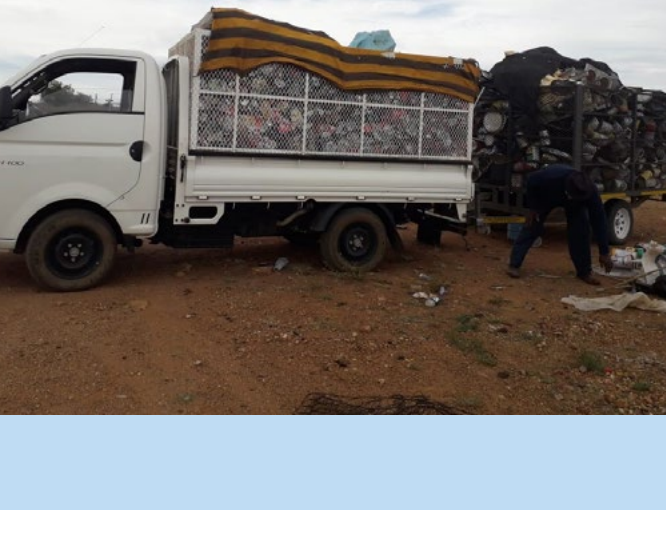
### #BIKES4ERP

Thanks to the fundraising efforts of Nicolai Van Der Merwe, Gert Vermeulen, and, of course, the generosity of ERP and Qhubeka, we were able to deliver 100 bicycles to 5 schools in Madikwe this year.



### BLOUBERG INITIATIVES: CLEAN UP CAMPAIGNS

As per what has become our annual tradition, we yet again rolled out two clean up campaigns this year, including the Thuma Mina Campaign in September for Heritage Month. This campaign aimed to promote a cleaner Senwabarwana through encouraging volunteers from within the community to get involved.



### WASTE MANAGEMENT AND RECYCLING PROJECT

Our recycling Cooperative played a vital part in keeping the town and surrounding areas clean through collecting, buying and selling waste materials. To date this year, they have recycled over 40 tonnes of mixed waste that would have been either landfilled or illegally dumped in Senwabarwana and other surrounding communities.



### E'PAP DISTRIBUTION

In 2018, we continued to support over 450 orphans and vulnerable children in Ndumo, through the provision of e'PAP, funded by ERP America. We are grateful to Jan Van Rensburg and his family for making time to visit the orphans at Ndumo, while visiting South Africa, earlier this year. Most importantly, we express our gratitude to ERP for providing continued support and funding for these vulnerable children.

In October this year ERP provided funding for over 50 orphans at Madikwe, ensuring that they will be fed over the Christmas period.



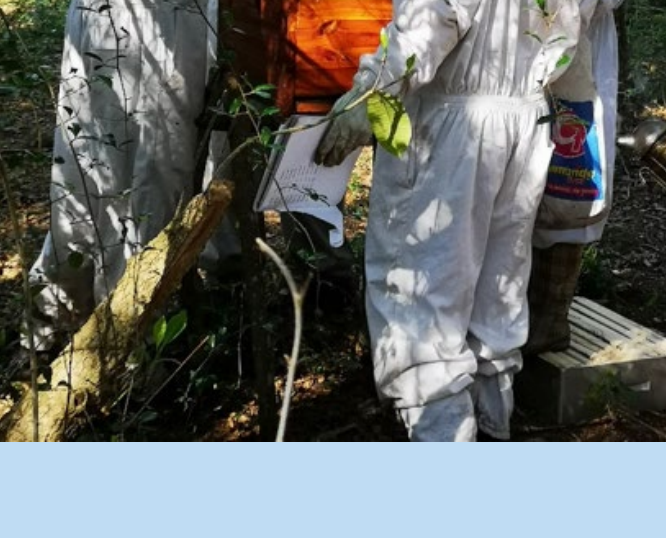
### DEPLOYMENT OF MATH U ANDROID TABLETS

One of the more exciting initiatives we rolled out this year was the deployment of 172 Android phones to Steve Biko School in order to assist students with their Maths and Science curriculum. As a result of this intervention, and after only a few months, one Grade 10 student progressed from obtaining 7,5% in his Maths exam, prior to using the Math U app, to scoring over 50% at the end of this year. This programme was funded by Maxtec and Innovent and we look forward to more outstanding results going forward. Changing lives and improving opportunities.



### GAZINI BEEHIVE FENCING AND AGRICULTURAL INITIATIVES

The Sekelekani Cooperative were provided with much valued funding from ERP to include an agricultural component, in addition to the honey production. The group has made significant progress in the development of their agricultural site and have continued to monitor and maintain the Beehive Fencing initiative. As a result of their tenacity and dedication, no elephant crossings from Mozambique have been reported since the inception of this scheme.



### DINOKENG BEEHIVE FENCING PROJECT

The expansion of our Human-Elephant Conflict resolution initiatives was rolled out in Dinokeng Game Reserve, where our youthful group of 12 previously unemployed beneficiaries set up 54 beehives in different parts of the Game Reserve in an effort to deter elephant crossings into the various lodges and outside the Reserve itself. We assisted the group with their business registration, and, through the Gauteng Provincial Government, we supported them in producing a viable business plan for the initiation and growth of their enterprise.



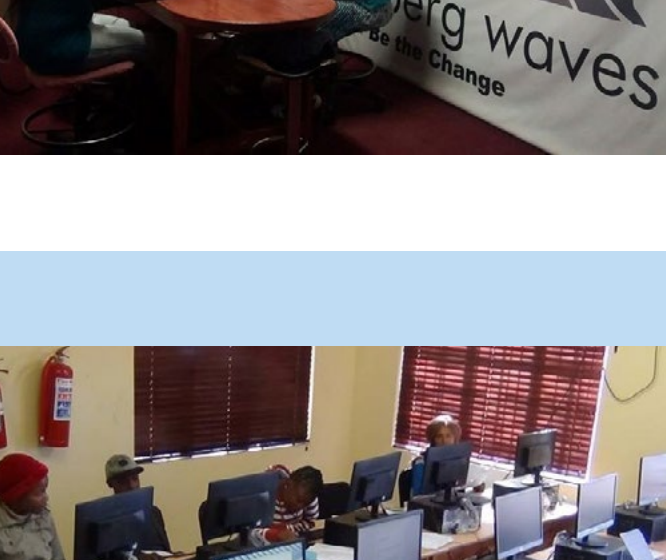
### MANDELA DAY INITIATIVE AT KEKANA GARDENS

This year, we once again were able to do something meaningful for Mandela Day in Kekana Gardens. The P.E.A.C.E. Foundation and EPI-USE donated a total of 115 blankets for the elderly in that community. In addition, we received a donation of clothes and food hampers from Housing Investment Partners - part of the Old Mutual Group - for the elderly and the orphans at the Day Care Centre.



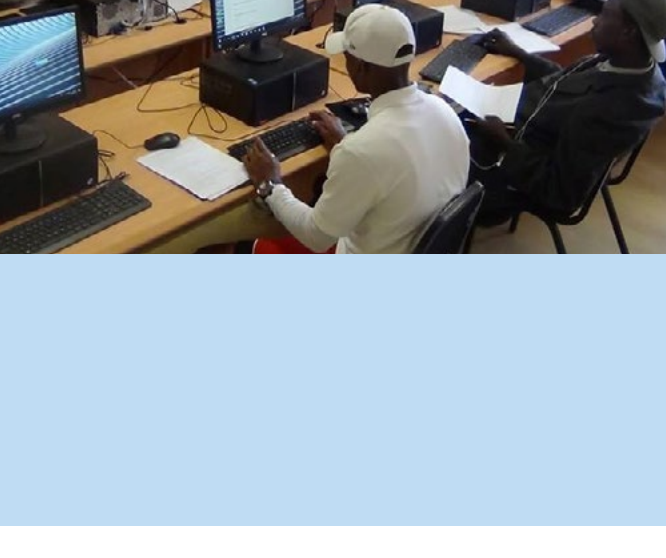
### WOMENS' MONTH PROGRAMME

During Women's month, in Kekana Gardens, we distributed 1,900 Elle Cups to young women, assisting them during their menstrual cycle. This intervention was accompanied by a very important educational programme to back it up.



### WATERBERG WAVES RADIO STATION & WOMEN'S DAY INTERVENTIONS

The Waterberg Waves Community Radio Station, in Vaalwater, continued to act as an ERP voice throughout 2018. Through one of their programmes, Hlago Ya Africa, the radio station showcased several women-led initiatives and enterprises during Women's month in August.



### THE VAALWATER CENTRE

An ongoing monthly payment from EPI-USE Africa, ensures that a management team is supported at the Centre, making it a vibrant HUB with a profoundly positive impact on the surrounding beneficiary communities. Along with this support, iLAB funded the further development of the IT Centre in Vaalwater. This funding support, given to a youthful George Boy of Reshma Business Development, has resulted in the establishment of TWO accredited IT enterprises. Having started at the Vaalwater centre, George moved out to Bakenberg which is home to 48 villages.

See video on [https://youtu.be/gyaiwme4\\_kY](https://youtu.be/gyaiwme4_kY).

A registered Hospice has been supported by the local community along with a private donor. The future, however, remains challenging and it is hoped that during 2019, we will successfully find funding for this much needed facility.



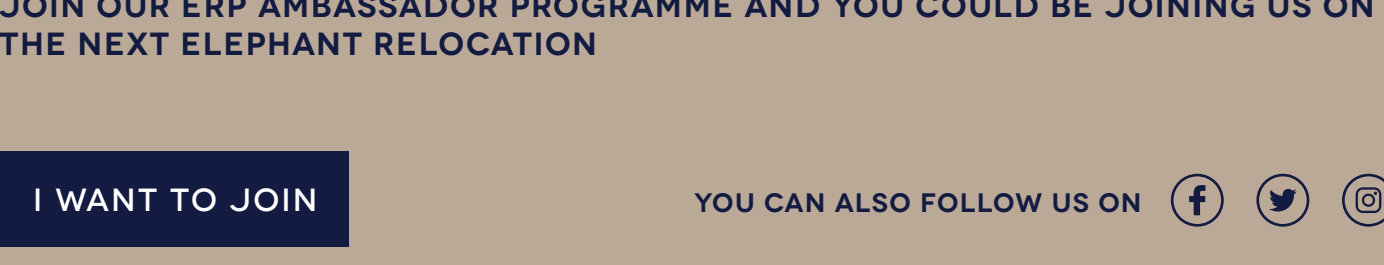
### PFARANANI SKILLS TRAINING CENTRE

One of the bigger projects we have been working on relentlessly through out the year is the Pfaranani Skills Training Centre. ERP took over the management of the Centre in October 2017. The Centre was provided, free of charge, by the Tshwane Municipality, to be managed and used in partnership with the local community, represented by SANCO. We have, during the years, provided a "We Code" training programme, to over 100 young people. Microsoft accredited training has been provided through Harambee and the Provincial Government to young, unemployed residents for the past six months. Workshops with local waste recyclers and local students were held during library week. As we conclude this year, we are preparing to set up an internet café and fast food restaurant, to support the Training Programmes that are planned to take place throughout 2019. We appreciate the funding from EPI-USE and iLab that have made this great opportunity possible. We are pleased to report that we have a commitment from a donor to provide funding for the further development of the Centre for 2019.



## DONORS AND FUNDERS OF OUR INITIATIVES THIS YEAR

We take this opportunity to thank our generous donors, who, throughout 2018, have enabled us to reach out to many in need, changing their lives for the better.



## BECOME AN AMBASSADOR

JOIN OUR ERP AMBASSADOR PROGRAMME AND YOU COULD BE JOINING US ON THE NEXT ELEPHANT RELOCATION

I WANT TO JOIN

YOU CAN ALSO FOLLOW US ON

FOR FURTHER INFORMATION, PLEASE CONTACT US AT [INFO@GROUPELEPHANT.COM](mailto:INFO@GROUPELEPHANT.COM)



**ABOUT ERP**  
The ERP strategy is the protection and preservation of Elephants and Rhinos in the wild through the alleviation of poverty among rural people adjacent to the threatened areas. ERP is an initiative of groupelephant.com, a largely employee-owned group of technology companies, nonprofits and impact investment vehicles with a strong global presence. groupelephant.com is characterized by a primary strategic imperative in terms of which we go 'Beyond Corporate Purpose' in our day-to-day activities. Our poverty alleviation methodology covers Planning, Education, Agriculture, Cooperatives and Environment (P.E.A.C.E.).