



ANNUAL REPORT

JUNE 2020 – MAY 2021





P.E.A.C.E. Foundation Trust Annual Report, 2020-21

30 May 2021

This document is a departure from the format of previous P.E.A.C.E. Foundation Trust annual reports, in that it is largely a digest of highlights from our monthly newsletters, during the reporting period. That said, it includes our usual Director's and Chairman's reports.

The reporting covers both P.E.A.C.E. Foundation Trust work in its own capacity, as well as in its role as the poverty-alleviation arm of Elephants, Rhinos & People ('ERP'), the groupelephant.com in-house NGO. groupelephant.com is the lead funder of the P.E.A.C.E. Foundation Trust's overheads and projects.

Should you require more detail on any of the showcased interventions, please contact me at nora@peacefoundation.org.za.

Yours faithfully,

Nora Tager
Executive Director



Trustees: Mr. LF Masibe (Chairman) Mr.P.M.Nhassengo (Secretary); Dr.J.Beare; Mr.A.Zulman; Mr.T.Mthethwa (Treasurer); Prof.H.Coovadia; Mr.P.M.Tembe; Ms L. Kunene; Mr.D.E. Malwane; Mr.F.I.Mabeba; Mr.K.P. Maleka.



ANNUAL REPORT | JUNE 2020 – MAY 2021

CELEBRATING 28 YEARS IN THE P.E.A.C.E. FOUNDATION

P.E.A.C.E. MISSION STATEMENT

“In the understanding that development means the development of people, it is the P.E.A.C.E. Foundation’s objective to provide disadvantaged communities with the necessary tools, skills and information to facilitate their own development, and, in so doing, improve their educational and socio-economic standards, ultimately, alleviating poverty.”

The P.E.A.C.E. Foundation’s amalgamation with ERP (Elephants, Rhinos and People), using the P.E.A.C.E. Model as the implementing process through which to alleviate rural poverty, has resulted in the broadening of the scope of our mission:

ERP MISSION STATEMENT

“To protect and conserve Elephants and Rhinos in the wild, THROUGH THE ALLEVIATION OF POVERTY”.

We believe that empowering communities in rural Africa is essential to the preservation of Elephants and Rhinos and the preservation of the cultural heritage of local People in Africa.

The front cover of this report reflects the essence of our extended Mission and is reflective of our belief in the future of Africa, and, in particular in Southern Africa.



EXECUTIVE DIRECTOR’S REPORT

As I write this report, it is hard to believe that we are still functioning under the lockdown restrictions that government imposed on the country in an effort to combat the spread of Covid-19 nearly 18 months ago. Tragically, these restrictions have negatively affected an already ailing economy and brought a great deal of individual suffering as a result of job losses, with many people in the most vulnerable communities unable to adequately feed themselves and their families. The national lockdown has highlighted the deplorable living conditions still being endured by a large portion of our population. These include lack of access to water, inadequate sanitation and shocking living conditions that are not conducive to the creation of healthy, safe and economically strong communities.

In an effort to alleviate the suffering of, specifically, the future beneficiaries of our restituted land acquisitions which are currently in progress, we took it upon ourselves, at the end of May, 2020, to make an effort to alleviate as much of the suffering as possible amongst our future partners. Job losses in the cities, resultant from the lockdown, caused immeasurable suffering amongst rural people who are to a large extent dependent on money sent back to them by relatives who are migrant labourers.

We launched and implemented a feeding scheme which covered three Provinces and fed about 2700 families monthly for a three-month period. Although, over the months the lockdown regulations have been relaxed to an extent, reviving jobs and lessening restrictions, the sad reality is that the economy has been damaged to considerably and will take years to recover. We have, therefore, a year later revived the feeding scheme to benefit our communities who have entered into partnership with ERP to conserve their biodiversity as well as their wildlife, in return for socio-economic opportunities to be provided. We look forward to a time when with sufficient access to water, seeds and support services in the field of agriculture - from small permaculture gardens to larger commercial initiatives, that our communities will be self-sufficient and able to meet their own sustainable food requirements. That is our mission to achieve this in the coming year.

Tragically, the P.E.A.C.E. Foundation lost two of it’s very longstanding and invaluable members – our lawyer and advisor over the past twenty years, Peter Rutsch, along with one of our founding members of the Foundation and a longstanding Board member of the Trust, Dumisani Malwane who, along with his brother, Mthandi Malwane, were two of the first people whom I met, at Ndumo, thirty years ago. Both Peter and Dumisani will be sorely missed. We are grateful, however, to still have the support and dedication to the work of the P.E.A.C.E. Foundation, by Mthandi, Dumisani’s brother, as well as Karl Wiggishof, who kindly stepped into Peter’s place and is committed to continue what Peter had initiated in the land acquisition initiatives at Tembe Mashabane in KwaZulu-Natal. Karl’s contributions to the work of the P.E.A.C.E. Foundation and ERP are ongoing and invaluable.

As we go into our 28th year of operation in the P.E.A.C.E. Foundation Trust, we plan to continue to utilise the longstanding P.E.A.C.E. Model, benefitting from innovative new technologies, with a focus on Artificial Intelligence (AI) and its impact on the various sectors in which we operate. This applies particularly to the fields of Education, Conservation and Agriculture. We continue to work with our committed team of staff, who work collaboratively to ensure excellent standards and accountability within all sectors of the P.E.A.C.E. Model that reflect our scope of work.

Este Smith, Managing Director of ERP, continues to work collaboratively with the P.E.A.C.E. Foundation, supporting our role as the Poverty Alleviation arm of ERP. With the technical, financial and strategic support that we continue to receive from the EPI-USE group of companies, we feel confident that the future of P.E.A.C.E., within ERP and the groupelephant.com consortium, will continue to expand our scope of our work within the geographic areas in which we currently operate, as well as further afield. It has been a great privilege and comfort to know that in spite of the national lockdown that has affected the funding of many NGOs, we continue to be supported by EPI-USE both locally and globally, ensuring that our monthly administrative costs are covered, and enabling us to work on projects and plan for the future with an assurance that 1% of their global income continues to support ERP initiatives.

We recently received an email from our former long-standing Chairman of the P.E.A.C.E. Foundation Trust's Board of Trustees, Stephen Owens, who emigrated to Australia, that he was interested in establishing an arm of ERP in Australia that would focus its funds on the protection of endangered animals in Australia, while using the P.E.A.C.E. Model as the chosen vehicle to address poverty among indigenous communities. We are very excited at this prospect and look forward to further discussions in this regard.

Now that ERP has finally procured a long lease agreement with the government conservation authorities as well as with the Community Property Association (CPA) at Madikwe, we are proceeding with implementing opportunities that will positively impact the socio-economic situation of the beneficiaries in both conservation initiatives, as well as poverty alleviation interventions in keeping with the P.E.A.C.E. Model's offerings.

I want to express my heartfelt thanks to the generosity of our donors, and the support of our longstanding Board of Trustees, and staff, and service providers, without whom none of our efforts would have been possible.

More detailed information describing much of the work that we have carried out during the course of the year will be provided in the form of extracts from our monthly newsletters, highlighting the core themes and interventions implemented.

Nora Tager
Executive Director



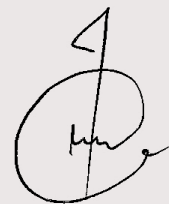
CHAIRMAN'S REPORT

Underdevelopment, poverty and ill health continue to define the daily experiences and hardships of the majority of South Africans. The COVID-19 pandemic aggravated matters by contributing landing a devastating blow to the already weak structures of our ailing economy. Unfortunately, the hardest hit are communities at the periphery. The P.E.A.C.E. Foundation has attempted to alleviate some of the suffering in rural communities adversely affected by the pandemic and its associated lockdown restrictions through the introduction of targeted feeding schemes. This is why even after nearly three decades of existence and provision of a helping hand to the poor, the P.E.A.C.E. Foundation Trust is still trusted by the majority of its beneficiaries.

As illustrated in this year's report, the P.E.A.C.E. Foundation Trust scaled up not only in terms of strengthening its in-house capacity and competencies directed towards delivering programmes for the needy, but we have also expanded our reach to impact more people positively and leave admirable legacies. Our programmes know no gender and age. At youth level we pride ourselves in creating learning platforms through our various IT centres within communities we work with, and we have witnessed school performance by our beneficiary learners rise significantly.

The food parcels we have delivered in Madikwe, Limpopo and KwaZulu Natal have had a tremendous positive impact on the recipients. We continue to be touched by the number of orphans and vulnerable children in remote areas, particularly those living in child-headed households, and we hope to do a great deal of work with them going forward in order to improve their living conditions.

With ERP at our side, providing much appreciated administrative and financial support, and our continued attitude of embracing flexibility in everything we do, we are confident we will grow from strength to strength.



Lesiba Masibe
Chairman of the Board of Trustees



THE P.E.A.C.E. MODEL:

The picture left shows the original prototype of the Ndumo Hall (HUB), built in 2004, incorporating a TeleCentre (the first of its kind in a deep rural community) thanks to Nedbank sponsorship and the connection to Maite Letsoalo, a colleague from Limpopo who was at the time working for the Universal Service and Access Agency of South Africa. The building also incorporated a pre-school, a bakery, office space for community meetings, showering and ablution facilities for participants in nearby sporting activities, a kitchen with catering facilities for meetings and community gatherings, inside the Hall, as well as a permaculture vegetable garden and a small waste collection initiative in and around Ndumo, serviced in the Hall grounds. In principle the same (along with some extra) services are offered in more recently designed and constructed HUBs with some excellent examples offered by Arthur Anderson from Got-Game.

It is our intention to impact positively on the livelihoods and quality of life of our beneficiary communities, through the strategic implementation of the P.E.A.C.E. Model, scaling all offerings to size, resources and needs of our beneficiary communities. The core vehicle for the delivery of P.E.A.C.E. initiatives is a cooperative model, addressing all sectors of the economy, in keeping with the centralized, holistic components, essential to replicable and sustainable practices. The services and support mechanisms for second tier cooperatives are delivered through the facilities and support systems provided in a Community P.E.A.C.E. HUB. In order for cooperatives to be effective and successful enterprises they require access to second tier cooperative structures that deliver centralized financial management services along with bulk-buying and bulk-distribution of local products through centralized collective branding and marketing opportunities.

ANTI - POACHING - THE USE OF DRONES

The development and use of drone technology to prevent poaching is led by David Allen at EPI-USE providing yet another example of the advantage gained by our partnership with EPI-USE. This technology being used currently at the Rietvlei Reserve, near Pretoria, has been a successful deterrent to would be poachers and we look forward to expanding its use to future conservation areas where we work in partnership with local communities.

**HUMAN/ELEPHANT CONFLICT -
BEEHIVE FENCING**

Beehive fencing is the quintessential example of the web and interdependence established through ERP between the wellbeing of animals in the wild, and the economic opportunities associated with this, which improve the lives of local people. As a solution to the incursion of elephants into community property, this initiative simultaneously provides local bordering communities with protection against invasion by elephants, and an assured income for the beneficiaries from the production of honey. The honey production is supported by agricultural initiatives which add to the livelihood of the community while providing additional forage for the bees, thereby increasing honey production.

The Sekelekani Honey Bee Co-operative are members of the Gazini community in Northern Umhlabuyalingana near the Mozambique Border. They were affected by elephants crossing over from Mozambique in search of water and food, while walking their historical route in high drought season.

This natural migration resulted in the destruction of subsistence crops on their route and instilled fear in the local community. ERP intervened with the proposed solution of Beehive fencing, previously well researched in Kenya, along with a strategically placed borehole on the Mozambique side of the border.

The success of this project has been a result of the tireless efforts and skills of Portia Morudi who has continuously supported the cooperative in the training, production and marketing of the product.



A second Beehive fencing project was successfully established on the border of the Dinokeng Game Reserve.

Portia has deservedly received a number of awards and accolades for her outstanding and innovative work in alleviating poverty through the production of honey. Her most recent outstanding achievement was winning the first place in the Food Lovers Market competition, comprising over 800 entrants, to select the best product that would be distributed throughout the country at all their 120 branches. We are very excited about this very special achievement and we have no doubt that this opportunity for marketing her honey will have a profoundly positive impact on the growth of her business. She has made us very proud.



The intention is to expand this initiative, throughout the Provinces of KZN and Limpopo, as an effective job creator with an assured income from reliable markets. This is a game-changer for poverty stricken rural communities in our country, in line with the ERP broader mission.

**ORPHANS AND
VULNERABLE CHILDREN (OVCS)**

e’Pap at Ndumo

Thanks to ongoing generous donations from EPI-USE (America) we have been able to continue to fund the more than 400 OVCs who do not have access to welfare grants and are totally dependent on donations for access to food. The Ndumo Orphans committee, headed by Mr. Don Mthembu (retired school Principal), and Mr. Bheki Mthembu (school principal) manages and supports these children with the assistance of field workers and caregivers. These children continue to be provided with an ongoing supply of e’Pap (food and nutritional supplement) as well as support from the caregivers who provide the care that they so desperately need. Recently we received a very generous donation from a member of EPI-USE staff in the USA, Jan van Rensburg and his wife Mariette that enabled us to provide school uniforms and shoes for 75 children in five schools. We are embarking, shortly, on an expanded fundraiser, in the USA to provide ongoing support for these very needy children.

The photo below is of Nokwanda Forgiveness Hlophe who benefitted from the supply of uniforms bought from the funds recently donated to the Ndumo orphans by Jan and Mariette van Rensburg. She is 12 years old of age and doing grade 5 at St Philips H P School. She was identified as the most vulnerable child when she was being fitted with her uniform at Pep Stores. One of the staff members noticed that her underwear was old and badly tattered. This was pointed out to Mr. Donald Khumalo and Mr. Don Mthembu from the Ndumo Orphans Committee and they realized that she needed more help than the others. They decided that two sets of uniform and two sets of underwear would be provided. It was clear that this child did not feel free to play with other kids at school knowing that her clothing was in such poor condition. The family of Nokwanda was visited and they were very happy that their child now had two sets of new school uniforms. The family have 5 children and they are all at school. The fifth boy was adopted since he had no place to stay as both of his parents had died. They are not related to this boy but in spite of their personal struggles they felt that they should help him. The boy is doing grade eleven in Ndumu High School.



Some of the orphans at Ndumo showing the distribution of the uniforms



Nokwanda Forgiveness Hlophe



CELEBRATING ENVIRONMENT
MONTH JUNE 2020

RURAL WASTE RECYCLING IS PART OF THE INITIATIVES WE IMPLEMENT IN COMMUNITIES TO BOTH PROTECT THE ENVIRONMENT AND PROVIDE INCOME AND MUCH NEEDED EMPLOYMENT OPPORTUNITIES.



NTSHABELEG WASTE MANAGEMENT COOPERATIVE

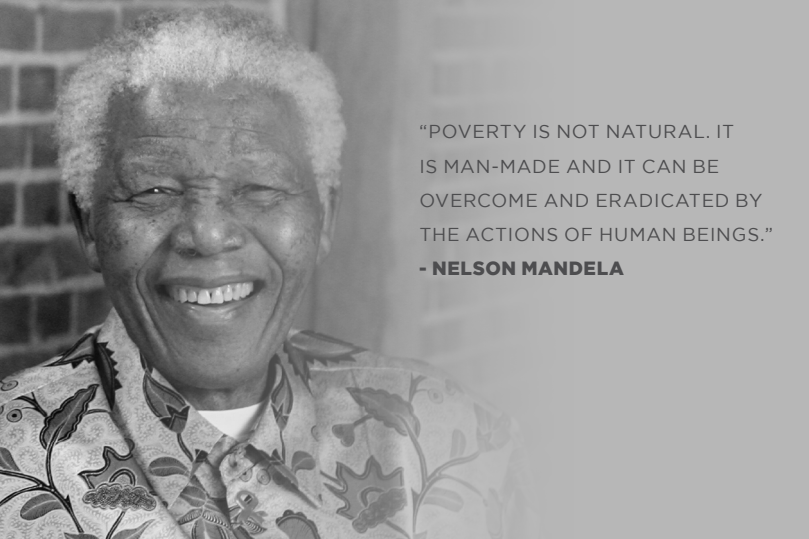
Although the Cooperative's waste collections were negatively affected by Covid-19 along with the onset of the winter season which often sees a reduction in the type of materials discarded, the Cooperative continued with their core business of waste recycling. The Cooperative and their team of waste collectors received their second round of food parcels on the 29th of June.

Thanks to Lorraine Mabeba, the Cooperative members continued to work on their vegetable garden as part of the food for waste programme that will lead to improved nutrition for the group and their family members with surplus being made available to the wider community.



Although South Africa has moved down to Level 3 of the Covid-19 lockdowns, most of our projects have been heavily disrupted and are still yet to commence operations. We however continue with the ERP food distributions, now into the second month, spread over 9 locations in 4 provinces.





“POVERTY IS NOT NATURAL. IT IS MAN-MADE AND IT CAN BE OVERCOME AND ERADICATED BY THE ACTIONS OF HUMAN BEINGS.”
- NELSON MANDELA

CELEBRATING A MANDELA MONTH
THROUGH OUR COVID-19 EMERGENCY
FOOD RELIEF PROGRAMMES
JULY 2020

ERP EMERGENCY FOOD RELIEF PROGRAMME

We dedicate this July newsletter to Nelson Mandela, in keeping with his belief that “poverty is man-made” and that there are ways for man to act to alleviate it. In view of the hunger and deprivation currently experienced in deep rural areas, that had resulted from the Covid-19 Lockdown, incurring current job losses and loss of income, we felt impelled to address the problem as much as it was in our capability to do that.

The relief effort through our ERP food relief scheme, was implemented over a three month period, which begun around mid-May and ended around mid-August. The programme focused on providing much needed relief to ERP’s current and future land restitution partners. We look forward to working closely with these landowners in the future, bringing much need socio-economic relief and an improvement in the quality of life of these current and prospective partners.

The programme reached a total of 11 recipient communities, spread over four Provinces, namely, North-West, KwaZulu-Natal, Gauteng and Limpopo. The images depict some of the communities where we distributed the parcels



Now that we have come to the end of our three month food relief programme, we are planning towards ensuring that long term programmes are introduced to all eleven distribution sites by providing much needed access to water and assistance with the establishment of permaculture food gardens, to address food security issues in these communities.





PRETTY WOMEN WONDER WHERE
MY SECRET LIES.
I'M NOT CUTE OR BUILT TO SUIT A
FASHION MODEL'S SIZE
BUT WHEN I START TO TELL THEM,
THEY THINK I'M TELLING LIES.
I SAY,
IT'S IN THE REACH OF MY ARMS,
THE SPAN OF MY HIPS,
THE STRIDE OF MY STEP,
THE CURL OF MY LIPS.
I'M A WOMAN
PHENOMENALLY.
PHENOMENAL WOMAN,
THAT'S ME.
**"PHENOMENAL WOMAN" BY
MAYA ANGELOU**

**APPRECIATING ALL WOMEN,
PARTICULARLY WOMEN IN P.E.A.C.E.
DURING THIS WOMEN'S MONTH
AUGUST 2020**



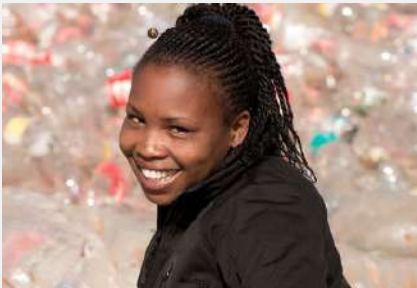
Edith Hlalele



Letticia Mahlatji



Nonceba Lushaba



Cosy Manoko



Malindi Kunene



Portia Morudi



Lorraine Mabeba



Sekelekani Cooperative



Ntshabeleng Cooperative

This month's newsletter was dedicated to women we have worked with in the P.E.A.C.E. Foundation, past and present, in recognition of their work and support, which has enabled us to carry out our mission within the Foundation.



CELEBRATING HERITAGE MONTH SEPTEMBER 2020

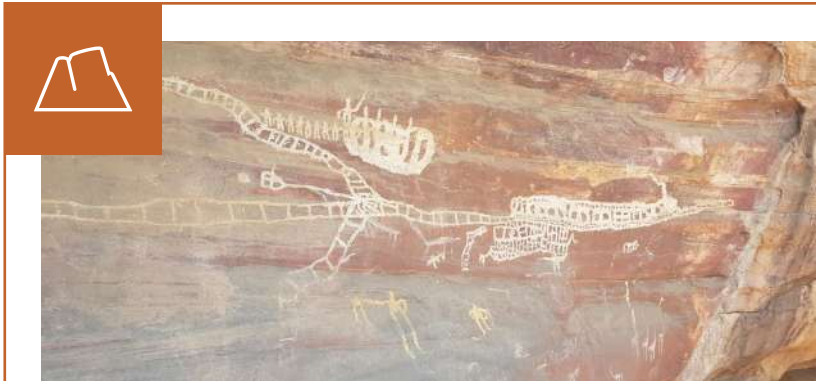
IN CELEBRATING HERITAGE MONTH, WE ARE VERY PRIVILEGED TO HAVE IN THE HEART OF THE BLOUBERG REGION, THE MAGNIFICENT AND EXTRAORDINARY MAKGABENG MOUNTAIN AND PLATEAU. THIS SITE IS ONE OF THE OLDEST DESERTS ON EARTH AND DATES BACK 2 BILLION YEARS. THE HILL FOUND ON THE PLATEAU IS KNOWN AS THABANA NHLANA AND PIETA MOUNTAINS AND ARE THE REMAINS OF THE PRECAMBRIAN DESERT.



KAGISO HUB LAUNCHED ON HERITAGE DAY

On Heritage Day, the WeCode Academy implemented by Got-Game was launched at Kagiso Mall. This academy comprises a fully-fledged IT Hub, with the capacity to teach 21 learners from the ages of 5 to 12 years old to code and translate that code into moving robots.

Celebrating past heritage through traditional song and dance, and the future through coding and technology reflecting the importance of culture and tradition in young lives.



HISTORY OF MAKGABENG ROCK ART

The Thabana Nhlana on the Mkgabeng mountain was plateau first inhabited by the San hunter gatherers who migrated from somewhere around central Africa to Southern Africa, centuries ago. The group moved via Botswana, Zimbabwe and Mozambique till they reach the shore and some settled in areas such as the Limpopo, Eastern Venda and Makgabeng. The story of the White train depicts the historical relevance of rock art recognized globally.





HIGHLIGHTING EDUCATION OCTOBER 2020

RURAL COMMUNITIES ARE FACED WITH MANY CHALLENGES WHICH PREVENT THEM FROM EXPERIENCING THE FULL BENEFITS THAT QUALITY EDUCATION CAN PROVIDE. SOCIAL, HISTORICAL AND GEOGRAPHICAL FACTORS HAVE ALL CONTRIBUTED TO THIS MOST DAUNTING CHALLENGE IN RURAL COMMUNITIES.



WECODE GRADUATION AT TEMBISA HIGH SCHOOL

On the 23rd of October, 25 Grade 11 students from Tembisa High School graduated from our inaugural coding class at the school. This is a 2 year programme, implemented through our partners at Africa's Got-Game which saw the students having access to a hands on theoretical and practical understanding of coding as an essential skill in this digital age.

Currently we are making use of MathU, School in a box, chess, IT training, online training programmes and coding to address the on-going prevalence of poor education in rural communities. The IT training at Vaalwater continued during the month of October.



#BIKES4ERP BLOUBERG DEPLOYMENT

On the 24th of October, the ERP team travelled to Blouberg in Limpopo, to deliver another fifty bikes through the #BIKES4ERP programme. These fifty bicycles were distributed to 3 high schools within the Blouberg Municipality, assisting learners from remote villages, to travel to school faster and easier and improving their academic results.

Thanks again to Nicolai van der Merwe, Gert Vermeulen, and their team from groupelephant.com South Africa's offices, for once again demonstrating the groupelephant.com mantra of 'Going beyond Corporate Purpose'. We also extend our gratitude to Lindsay Saker Germiston, Inkwazi Adventures and Postnet Raslouw for their sponsorship towards the delivery of the bikes to this remote region.

The P.E.A.C.E. Foundation has demonstrated that the provision of access to educational tools and systems deployed through IT in deep rural communities can vastly improve the standard and quality of education in these remote communities – from preschool to tertiary standards.



NOVEMBER – DECEMBER 2020

THANK YOU TO ALL OUR TRUSTEES, DONORS, PARTNERS AND BENEFICIARIES FOR YOUR SUPPORT THROUGHOUT THIS CHALLENGING YEAR.



OUR RESPONSE TO COVID-19

Following the several months long lockdown brought about by Covid-19 in South Africa, which resulted in economic devastation throughout the country, and tragic cases of desperation and hunger within communities where we operate, ERP once again stepped in and provided much needed food relief during the festive season.



RIETVLEI DEHORNING

We recently embarked on yet another rhino dehorning exercise as part of our anti-poaching strategy at Rietvlei Nature Reserve. This is an essential measure we use as part of conserving rhinos that are protected in the various Reserves from where we operate. In recent times, we have undertaken the dehorning process annually, since rhino poaching has been on the increase. Harvesting the rhino’s horns, though sad as it appears, has been proven to be an effective way of deterring poachers and thereby, preserving the lives of these precious almost extinct animals. In addition to the dehorning, ERP utilizes various forms of technology supported by, our ERP volunteer Ranger teams. Our 24-hour anti-poaching and dog unit is an additional and effective part of our anti-poaching strategy. Present during this dehorning exercise was our ERP Ambassador, Clement Maosa, who continues to advocate for the ERP Mission.



NDUMO ORPHANS FEEDING

We are deeply grateful to EPI-USE America for providing funding for the past twelve months to feed the 400 orphans at Ndumo who do not receive government grants as they don’t have birth certificates. The funding that we receive ensures a daily supply of e’Pap for these children along with costs covered to provide 20 caregivers who supervise and monitor these children, many of whom are not in school.

As we conclude this year, we look forward to further assisting these communities in the year ahead, through provision of potable drinking water and food security interventions that should see them become more self-sufficient in the years that lie ahead.



“IF YOU CAN'T FLY THEN RUN,
IF YOU CAN'T RUN THEN WALK,
IF YOU CAN'T WALK THEN CRAWL,
BUT WHATEVER YOU DO
YOU HAVE TO KEEP
MOVING FORWARD.”

- MARTIN LUTHER KING

HIGHLIGHTS FROM JANUARY 2021

REGARDLESS OF THE CHALLENGING CIRCUMSTANCES GRIPPING THE NATION AND THE WORLD AT LARGE OWING TO THE COVID-19 PANDEMIC, WE CONTINUE TO PURSUE OUR MISSION THROUGH OUR VARIOUS POVERTY ALLEVIATION INTERVENTIONS, WITH A POSITIVE OUTLOOK FOR THE YEAR AHEAD.

NTSHABELENG WASTE MANAGEMENT COOPERATIVE

The Cooperative resumed their operations for 2021, and have managed to collect and sell a variety of waste materials, including the PET, which had been difficult to market during the course of last year. The Cooperative have also begun to plant a wider variety of vegetables, as part of expanding their permaculture food for waste programme, in the hope that this year, we will replicate this model to other ERP beneficiary communities.



VAALWATER CENTRE

As a result of the Covid-19 lockdowns, and risks associated with conducting classes within a classroom environment, the Vaalwater Centre has gone virtual, and is currently conducting Information Technology - End User Computing training until June 2021. At present, this programme is benefiting 40 students, whilst also providing a viable business model for the sustainability of the IT Centre at Vaalwater. We are grateful for CSI funding received from Barloworld and iLAB, which, through our partners at Got-Game, will be utilized to implement more online IT related programmes, through the Centre, in the months to come.

Waterberg Wave
92.8 FM
waterberg wave

Hlago ya Afrika
Monday to Friday
@ 12H00pm to 14H00pm

"Leticia"
Mrs. L. Moshogae

WATERBERG WAVES RADIO STATION

With South Africa being back on level 3 of the national lockdown, Waterberg Waves continues to communicate virtually with their partners with regards to the 2021 environmental education and awareness plans. We will provide an update of these plans once finalized. The radio station continues, however, to broadcast a variety of programmes, including the daily ERP awareness programme, Hlago Ya Afrika, hosted by Leticia.

SEKELEKANI COOPERATIVE



In our monthly December Newsletter, we reported that the Cooperative were drying their chillies. We are happy to report that they since sold the produce to the market at a profit giving them a much valued income to share as well as funds to invest in the further growth of their enterprise, reaching sustainability. Currently, the Cooperative is busy harvesting the second picking of chillies, which will then be dried and sent off to the market at the end of January.

Even though we face the difficulties of today and tomorrow, I still have a dream. - Martin Luther King



HIGHLIGHTS FROM FEBRUARY 2021

“SUCCESS IS NOT THE KEY TO HAPPINESS. HAPPINESS IS THE KEY TO SUCCESS. IF YOU LOVE WHAT YOU ARE DOING, YOU WILL BE SUCCESSFUL.”



NTSHABELENG COOPERATIVE

Ntshabeleng Waste Cooperative recently received funding from PETCO, through the Coca Cola Covid-19 relief grant. The two month grant aims to provide a cushion to the Cooperative’s operations, through providing operational expenditure relief. This is an incentive based fund, with the Cooperative’s waste collections over the past few months being used as a benchmark for both the initial and second tranche of funding, which will come to an end at the end of March. We express our sincere gratitude to PETCO, who have continued to support this Cooperative over the past 6 years. We salute these dedicated women on the work done under extremely difficult circumstances.



SEKELEKANI COOPERATIVE- GAZINI

Due to the excessive rains persisting in many parts of KZN, Gazini was greatly affected. Cooperative’s operations have, as a result, been somewhat derailed, as they could only work once the rains subsided. They managed, however, to continue harvesting the chilli crop, once they could access the land and they currently have just under 3 tonnes ready to be sold off. We sadly anticipate a slight drop in the total volumes of the chilli crop due to the persistent rain. They will, however, harvesting honey in a few weeks’ time, which will aggregate their income from the chilli sales. We are in the process of setting up additional new hives around the agricultural plot, which will then be populated with bees in order to reinforce the human-elephant conflict resolution aspect of this project. We salute these women for their courage and determination in assisting to achieve the goals of ERP against all odds.

TEMBE MASHABANE STAKEHOLDER MEETING

A meeting was held in KZN to present the ERP offering to the two iZunduna from the Tembe Mashabane communities as representatives of their people. In attendance was Nkosi Tembe and Zama Molefe from the Department of Rural Development and Resettlement. We thank Nkosi Tembe, Mthandi Malwane and Mandla Tembe for their efforts at fulfilling ERP’s mandate to gain land and partner with local community representatives to assist conservation through the alleviation of poverty.



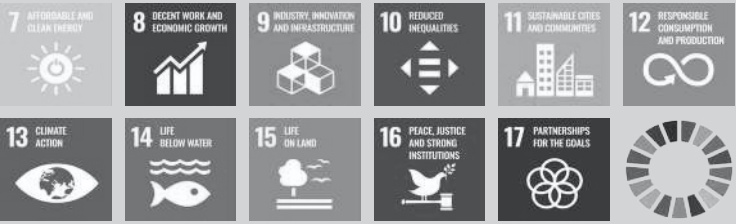
These reports reflect the love and commitment carried out by some of the people who implement P.E.A.C.E. projects in remote communities under huge challenges.



#BIKES4ERP

With the reopening of schools in mid-February, Samuel Matheta, the appointed bicycles mechanic, has commenced with the weekly monitoring of usage of the bicycles by beneficiary scholars, whilst also attending to any repair work. He has had his hands full over the past couple of weeks, as some of the students had not been able to reach out to him during the holidays for his assistance. We continue to support Samuel, and we are pleased to report that, through his dedication, this intervention continues to provide students with opportunities to travel to and from school timeously, allowing them more time to focus on their school work and produce improved academic results as has been shown in our previous impact assessment of this initiative.

SUSTAINABLE DEVELOPMENT GOALS



CELEBRATING THE P.E.A.C.E. MODEL’S CONTRIBUTION TOWARDS ADDRESSING BASIC HUMAN RIGHTS, THROUGH ATTAINING THE SUSTAINABLE DEVELOPMENT GOALS IN THE MONTH OF MARCH

THERE WILL NOT BE SUSTAINABLE ECONOMIC VALUE CREATION IF THERE IS NO PERSONAL DEVELOPMENT AND HUMAN VALUE CREATION AT THE SAME TIME.
 – MUHAMMUD YUNUS

1 NO POVERTY

BAROKOLOGADI COMMUNITY – MADIKWE

ERP is happy to report that we have started with community surveys within the BCPA community, guided by the tenets of Participative Rural Appraisal. The surveys will inform our programmes for these communities, and will enable us to craft the best possible interventions as advised by the beneficiaries themselves.

2 ZERO HUNGER

PROVISION OF E’PAP TO NDUMO ORPHANS

Over the past 15 years, monthly supplies of e’Pap have been supplied to the over 400 orphans at Ndumo who are not eligible for government grants. Funding is also supplied to care givers who supervise and monitor their plight.

3 GOOD HEALTH AND WELL-BEING

PROVISION OF VEGETABLE GARDENS

Through the food for waste programme, the Ntshabaleng Cooperative grows fresh vegetables to benefit themselves and the other waste collectors within their network.

4 QUALITY EDUCATION

UPDATE ON THE VAALWATER ICT CENTRE

The ERP funded Vaalwater centre continues to train students in ICT literacy ensuring a better future.

5 GENDER EQUALITY

WATERBERG WAVES RADIO PROGRAMMES

On a daily basis, the radio station has been promoting programmes to address violations against women and gender based violence in Vaalwater.

8 DECENT WORK AND ECONOMIC GROWTH

SEKELEKANI COOPERATIVE – GAZINI

This Cooperative is a successful solution to the creation of meaningful work and economic growth.

11 SUSTAINABLE CITIES AND COMMUNITIES

NTSHABELENG COOPERATIVE

This Cooperative is a fine example of sustainable development along with positive socio-economic and environmental spin-offs in keeping their environment clean whilst managing their business.

Overcoming poverty is not a task of charity, it is an act of justice. Like Slavery and Apartheid, poverty is not natural. It is man-made and it can be overcome and eradicated by the actions of human beings. Sometimes it falls on a generation to be great. YOU can be that great generation. Let your greatness blossom”
 – Nelson Mandela



HIGHLIGHTS FROM APRIL 2021

“FOR TO BE FREE IS NOT MERELY TO CAST OFF ONE’S CHAINS, BUT TO LIVE IN A WAY THAT RESPECTS AND ENHANCES THE FREEDOM OF OTHERS.”
– NELSON MANDELA



PORTIA MORUDI WINS SEEDS OF CHANGE COMPETITION

Pictured here is Portia Morudi with our ERP Ambassador Clement Maosa. Portia, who is our partner responsible for the production of honey through the ERP human elephant conflict resolution initiative, recently won first position at the Food Lover’s Market’s Seeds of Change Supplier Development Partnership. She competed against 800 entries.

We take this opportunity to express our gratitude to Clement for continuing to promote the ERP brand on social media where he has over 1,4 million followers. We look forward to continue working with him in the future.



TEMBE – MASHABANE

A workshop was held recently with the representatives of the Tembe Mashabane Reserve in order to involve the community in the development of their constitution along with the presentation and approval of the MOU for the Tembe Mashabane Game Reserve. The outcome of the discussions was that the MOU presented was unanimously accepted as suitable for the interim agreement between Tembe-Mashabane Voluntary Association and ERP/P.E.A.C.E. Foundation. The image above shows the piece of land being negotiated.



VAAIWATER – ICT CENTRE

Thanks to the generous Skills Development funding received from G3G (a groupelephant.com company), the ICT centre at Vaalwater has been able to employ 3 members of staff. These will be responsible for the successful deployment of various ICT related training programmes over the next 12 months.

With Freedom comes the collective and individual responsibility to abide by rules and regulations within society. Without this obligation, freedom becomes anarchy.



HIGHLIGHTS FROM MAY 2021

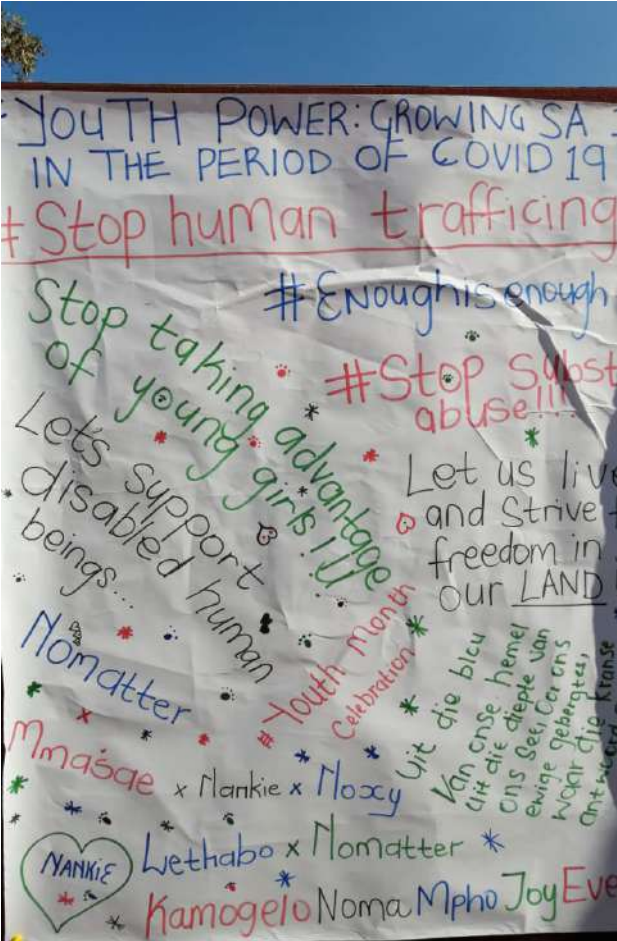
“FOR TO BE FREE IS NOT MERELY TO CAST OFF ONE’S CHAINS, BUT TO LIVE IN A WAY THAT RESPECTS AND ENHANCES THE FREEDOM OF OTHERS.”
– NELSON MANDELA

VAALWATER CENTRE COMMEMORATES YOUTH DAY

The ERP funded and supported Vaalwater Centre hosted a youth day celebration on June 16th. This was organised by the centre’s beneficiaries, mostly youth, who planned to commemorate this day differently. Part of their activities for the day included designing and showcasing posters raising awareness on the rights and obligations of the youth. Additionally, they invited motivational speakers from within the community who engaged the youth through public speaking and focused discussions.



We have a powerful potential in our youth, and we must have the courage to change old ideas and practices so that we may direct their power toward good ends.
- Mary McLeod Bethune



AMBASSADOR PROGRAMME



We want to express our very sincere appreciation to Clement Maosa, well known TV star and celebrity, and his business manager, Bonga Percy Vilakazi, for their continued support in promoting ERP into Clement’s extraordinarily large social media following of 1.4 million followers on Instagram alone. By sharing our news on his social media platforms and promoting the work of ERP, we tap into the interest of young people regarding the importance of poverty alleviation in the protection of our wildlife heritage for future generations. We are most grateful to Clement for his continued wholehearted and dedicated support of ERP.

Clement Maosa and the Mayor of Blouberg Municipality, Clr Pheedi

STAFF

I want to express my heartfelt gratitude to the P.E.A.C.E. Foundation staff, previously based in our head office in Johannesburg, and who have over most of the past year, been confined to working from home and continuing to keep our initiatives going as well as possible under the constraining circumstances, as well as those members of staff and facilitators, driving our projects in far flung places. Without their commitment, loyalty and dedication to the work that they do on a daily basis, we would never have been able to make the impact that we have in the lives of our beneficiaries in rural South Africa, in spite of the limiting circumstances imposed by the lockdown.



Edith Hlalele
Financial & Office Administrator



Thami Mupawose
Project Management



Cosy Manoko
Centre Manager (Limpopo)



Eliot Chisango
Environment & Waste Management

A special word of thanks to our Chairman, Lesiba Masibe, who has not only been supportive through his position of Chairman but also for the role he plays in driving ERP programmes throughout the Limpopo Province and, in particular, in the Madikwe Reserve in the North West Province, with a particular focus on developing community participation in prospective land partnership deals. As Chairman of the Waterberg Biosphere Reserve and his with his extensive experience in both community facilitation and leadership, he has impacted meaningfully on all our potential and current partnerships with local communities in those regions. Mthandi Malwane aided by Mandla Tembe (a longstanding Trustee on our Board) continues to facilitate our land deal initiatives with rural communities who have restituted land and with whom we seek mutually beneficial partnerships.

FUNDERS AND PARTNERS



Continued support, over a period of many years, from the Victor Daitz Foundation in funding a portion of our administrative costs is always greatly appreciated.

We are grateful to iLab, a member of the EPI-USE group of companies, which has once again funded the establishment of additional IT training labs at the Vaalwater Centre, along with internet cafés, and funding for Coding programmes, to provide the community with access to training and information. This has had a profoundly positive impact on the lives of young people in the vicinity. Recent funding from G3G (a member of groupelephant.coM) has provided us with an opportunity to expand our Skills Training programmes at the Vaalwater Centre and EPI-USE Labs who have generously funded our Enterprise Development initiatives, based on IT programmes being deployed in rural communities.

We are most grateful to Nicolai Van Der Merwe and Gert Vermulen from the EPI-USE staff members whose tireless efforts have enabled us to provide bicycles to various schools in our projects throughout the year. (See link to recent video – picturing the latest deployment of 50 Bikes for ERP to Blouberg)

Through the African Schools of Excellence (ASE), located in Tsakane we were in the process of piloting new high-tech innovations, sponsored by Nokia, that we believe will impact positively on the lives of young people in this country, demonstrating among other initiatives, that agriculture can be a high-tech opportunity to drive an economy through tech-based agriculture. These initiatives have, regrettably, been suspended due to the closure of schools as a result of the lockdown, but we look forward to a future where we will be able to pass these opportunities on to the learners, once more.

The Ashoka network provides a valuable group of partners, globally.

A photograph of a dirt road in a rural landscape. On the left, there is a wire fence supported by wooden posts. The road is reddish-brown and leads towards a range of mountains in the distance. The sky is blue with some light clouds. The foreground is filled with dry, reddish-brown soil and some sparse green grass.

CONCLUSION

We conclude this report with a quote from Nelson Mandela, who said: "Overcoming poverty is not a task of charity, it is an act of justice. Like slavery and apartheid, poverty is not natural. It is man-made, and it can be overcome and eradicated by the actions of human beings. Sometimes it falls on a generation to be great. YOU can be that generation. Let your greatness blossom!" We remain committed to the pursuit of this belief.



P.O. Box 787464,
Sandton, 2146

Tel: +27 11 057 1192

www.peacefoundation.org.za
www.groupelephant.com

